

Instructions

Topan VP13 Verner Panton 1959



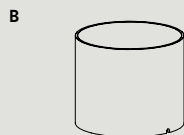
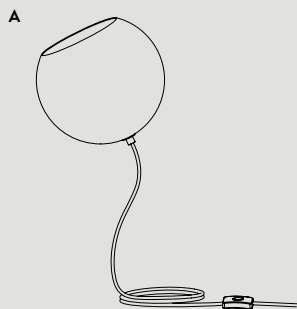
Please read these instructions carefully and retain them for future reference to ensure the product is used correctly. For your own safety, please study each step of this instruction manual first. &Tradition is not responsible for any faults or damage caused by not following these instructions correctly. Do not modify this product in any way. If you have any questions or comments, please do not hesitate to contact us by mail on: info@andtradition.com

&Tradition[®]

Topan VP13

Verner Panton

1959



Safety precautions

- Dispose of plastic bag from packaging immediately and keep out of reach of children.
- The lamp is only intended for interior use.
- Do not place the cable within reach of small children or anywhere there is a risk of it becoming a trip hazard.
- If the external cable or cord of the lamp is damaged, it must be replaced by the manufacturer or a similarly qualified person to avoid any potential hazards.
- Consult a professionally qualified electrician if in any doubt.
- Keep the product well out of reach of children.

Contents

- A Lampshade
- B Lamp base

Tools needed

- Bulb type E27

Cleaning instructions

- Wipe surface of the shade with a dry cloth.
- Do not use any abrasive cleaning tools such as steel wool, scouring sponges or stiff brushes.
- Never use strong cleaning agents such as white spirit, turpentine, household glass cleaner or cellulose thinners.

12/24

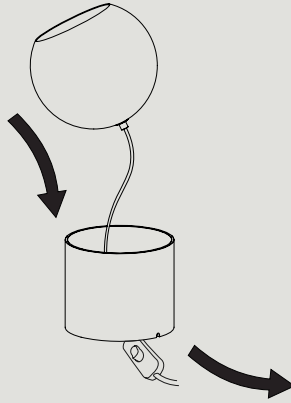
For indoor use only
E27 Maximum 12W LED
Bulb not included



&Tradition®

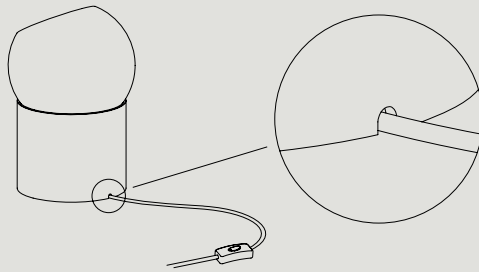
Step 1 / 4

Pass the cord through the acrylic tube and carefully place the lamp on top.



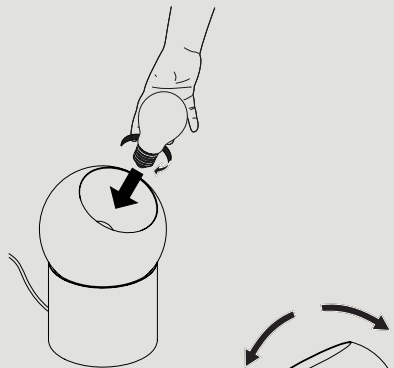
Step 2 / 4

Make sure that the cord aligns with the hole at the bottom to prevent it from being squeezed.



Step 3 / 4

Install the lightbulb, then plug in the lamp into a power source.



Step 4 / 4

Always lift the lampshade slightly when adjusting its orientation to avoid scratching the surface.



